



Product Guide

MX Series...

MX Series

Indoor Modular Blowers

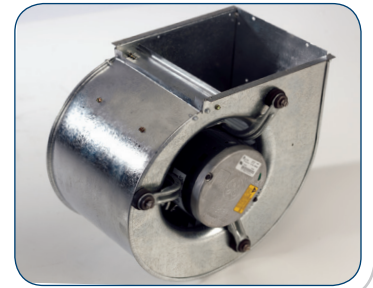


The Premier Upgrade for Any System...

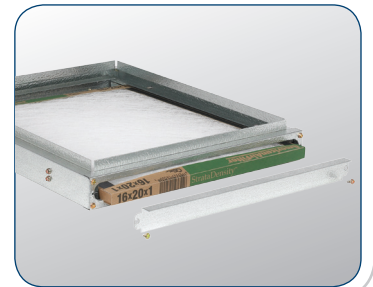
Introducing MX Series Modular Blowers by ADP. These compact modular units match perfectly with your system and allow for a flexible “one-man-job”.



Multiple electrical connection locations for easy installations



Slide out blower assemblies

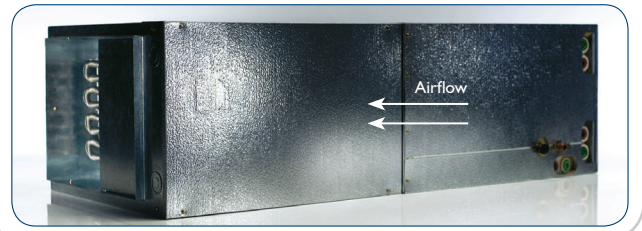


Optional filter rack accessory

Approved for single family and manufactured home applications

Combine with an existing ADP coil in inventory to reduce SKU's

Flexible configurations:
Upflow, Downflow and Horizontal



Note: MX Series air handlers with hot water heat can be installed in similar configurations - see installation instructions for further details.



Option 1: Electric Heat

MX Series can be used as a stand-alone electric furnace or combined with an ADP coil.

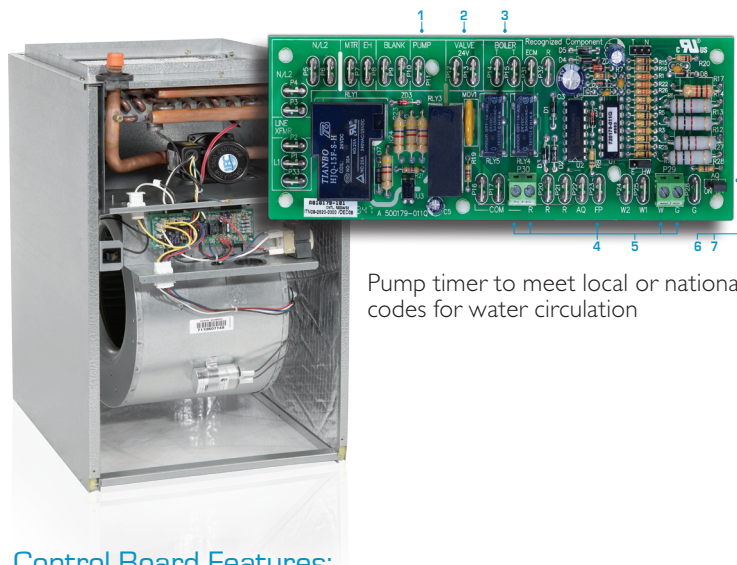


Electric heat unit features:

- Available for field installation
- Slide-out panel with one-point electrical connections
- Add an ADP coil to make modular air handler unit

Option 2: Hot Water Heat

Easy to read plug and play multi-function control boards provide fast access to key features.



Pump timer to meet local or national codes for water circulation

Control Board Features:

1. Controls both factory and field installed circulating pumps
2. 24 VAC isolation valve control
3. Auxiliary contacts for water heater or boiler activation
4. Freeze protection activates at 40°F
5. Thermostat connections
6. 60 second time delay for blower activation
7. 130°F aquastat time delay for blower activation (optional)

The ADP Advantage...

FLEXIBILITY

ADP tailors custom solutions to meet your unique market needs.

QUALITY

ADP proprietary testing technology ensures leak-free performance at the higher operating pressures of R-410A systems.

SERVICE

ADP coils and air handlers are made for seamless installation and easy access.

ENERGY SAVINGS

Many models are available to achieve higher SEER levels for ENERGY STAR compliance, utility rebates, and federal tax credits.

WARRANTY

MX Series modular blowers feature a standard 5-year limited warranty.

Product Nomenclature



MX C 08 00 N 2 E

Series

MX series

Blower Motor

C: 3-speed PSC motor

Size/Airflow

08: 800 CFM
 12: 1,200 CFM
 16: 1,600 CFM
 20: 2,000 CFM

Hot Water Coil

00: No hot water coil
 WP: Hot water coil with pump
 WN: Hot water coil without pump
 AP: Hot water coil with 130°F aquastat & pump
 AN: Hot water water coil with 130°F aquastat & without pump

Heat Size

B: 3 row hot water coil^[1]
 (available on 08 & 20 models)
 C: 4 row hot water coil^[1]
 (available on 08, 12 & 16 models)
 E: No heat ^[2]
 (electric heat kits sold separately)

Voltage

2: 208/240V, 60 Hz, 1 ph, with time delay^[2]
 4: 120V, 60 Hz, 1 ph, with time delay^[1]

Line Voltage Connection

N: Stripped wires

[1] Hot water heat only available in 120V, 60 Hz.

[2] Electric heat kits can only be used with 208/240V only and are field installed.
 For these kits please see accessories price list.

Note: Approved in the state of Massachusetts.

Air Handler Size		08	12	16	20
Dimensions	Height (in)	27	27	28	28
	Depth (in)	20 ½	20 ½	20 ½	20 ½
	Width (in)	17 ½	17 ½	21	24 ½

Proudly distributed by:

2175 West Park Place Boulevard
 Stone Mountain, Georgia 30087
www.adpnow.com

ISO 9001:2008
 —Registered Quality System—



SL-MX-09
 April 2016