

Model MSR

MSR & MSR-DC OIL BURNERS

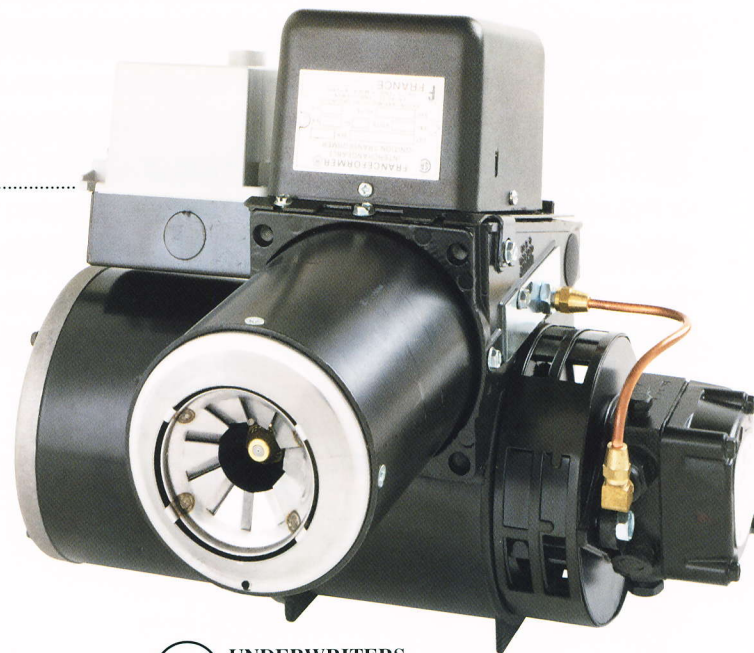


WE TAME THE FLAME

MSR features:

MSR features specifically designed burners for No. 1 and No. 2 fuel oil burners which are available in 120 volts and 230 volts AC. This burner features:

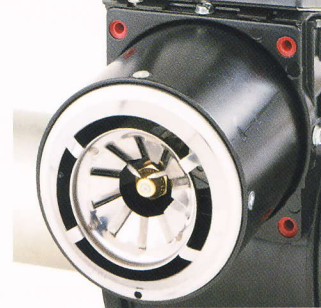
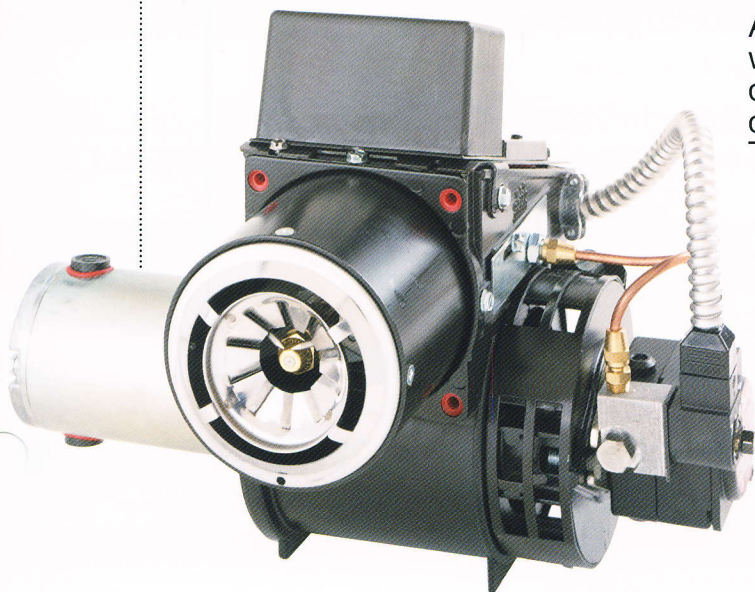
- Flamelock retention head results in improved efficiency and lower emissions
- Low nozzle temperatures
- Positive flame retention
- Controlled flame pattern
- High static pressure which overcomes adverse draft conditions



MSR-DC features:

A specially designed burner for No. 1 or No. 2 fuel oil which allows the burner to operate from a gasoline driven engine through the alternator and a heavy duty battery without the need for a generator. This burner features:

- Standard MSR product and combustion features
- Specially designed 12 volt solid state, constant duty ignitor
- 12 VDC, permanent magnet, ball bearing motor
- Industry standard MSR components with the exception of motor and ignitor



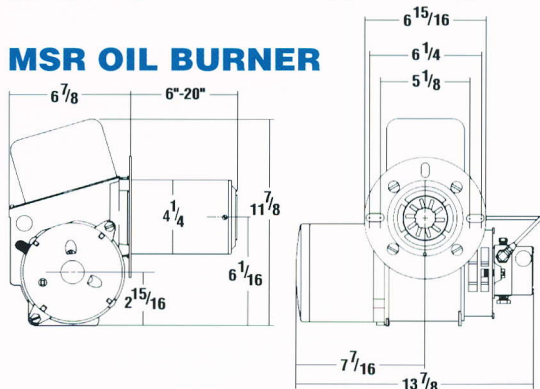
Specifications

MSR & MSR-DC OIL BURNERS

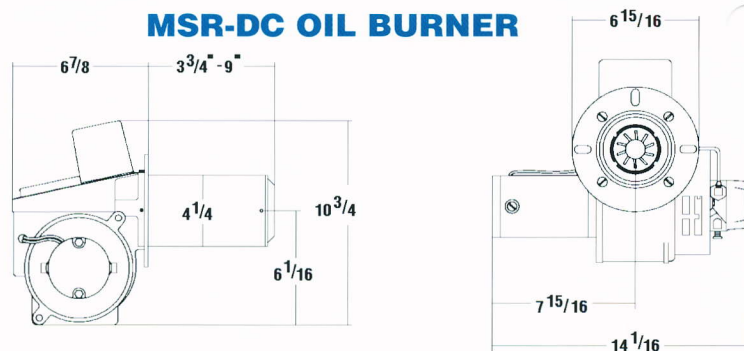
MSR OIL BURNER

Capacity	0.50 thru 2.75 G.P.H., No. 1 or No. 2 fuel oil.
Fuel Pump	Standard 3450 R.P.M. fuel pump-serviceable anywhere. One or two stage.
Controls	Optional safety primary control and CAD cell.
Ignition	10,000 V. constant duty transformer. TV-Radio interference proof. Positive make or break contact with electrodes. Swing-away design swings open for easy access to gun assembly.
Motor	NEMA Standard, 1/7 H.P. Split Phase 3450 R.P.M. 115 V, 60 HZ.
Fan Housing	One piece, die cast aluminum which aligns all moving parts.
Mounting	Adjustable flange or base mount.
Nozzle Adapter	Patented no drip brass adapter insures sharp oil cutoff when fuel pump shuts off. Bleeds air from line, prevents afterdrip, eliminating smoke, soot and carbon formation.
Air Adjustment	Patented multiple air adjusting bands interlock for positive air adjustment.
Air Tube	Heavy duty 13 gauge seamless material.
Flame Retention Head	High temperature stainless steel for longer life.
50 HZ burners available	Maximum firing rate reduced to 2.25 G.P.H. at 50 HZ operation.
Shipping Weight	Approximately 35 LBS.

MSR OIL BURNER



MSR-DC OIL BURNER



MSR-DC OIL BURNER

Capacity	0.50 thru 2.75 G.P.H., No. 1 or No. 2 fuel oil.
Fuel Pump	Compact 3450 R.P.M. single stage 3 G.P.H. capacity.
Motor	12 VDC, permanent magnet, ball bearing with replaceable brushes, 4500 RPM, 12.5 full load amps, .22 HP.
Ignitor	12 VDC, constant duty, solid state, mid point ground. Input-12 VDC, 50 VA, full load amps 5.2. Output -20 KV peak, 28 MA.
Controls	Ignitor drop-out circuitry timer available.
Oil Valve	Non delay, 24 VAC/12 VDC, .6 Amp, fuel pump mounted.
Fan Housing	One piece, die cast aluminum which aligns all moving parts.
Mounting	Adjustable or fixed mounting flange.
Air Adjustment	Patented multiple air adjusting bands interlock for positive air adjustment.
Air Tube	Heavy duty 13 gauge seamless material, available in tube sizes from $3\frac{3}{4}"$ to 15".
Flame Retention Head	High temperature stainless steel for longer life.
Shipping Weight	Approximately 25 LBS.